

 **ROYAL GROUP**
WWW.ROYALGROUP.VN

CROWN JSC
Road No 6, Binh Thuan 6 Industrial Park,
Mien Tayh District, Dong Nai Province, Viet Nam
Tel: (84-271) 3550 618 Fax: (84-271) 3550 552

ROYAL MANUFACTURE AND INVESTMENT JSC
Road No 6, Binh Thuan 6 Industrial Park,
Mien Tayh District, Dong Nai Province, Viet Nam
Tel: (84-271) 3550 618 Fax: (84-271) 3550 678

ROYAL CERAMIC TILES CO., LTD
My Anh A Industrial Park, Phu My Thuan,
Ba Ria - Vung Tau Province, Viet Nam
Tel: (84-254) 3833170 Fax: (84-254) 3834412

 **ROYAL STONE**

CATALOGUE

CROWN JOINT STOCK COMPANY
WWW.ROYALSTONE.VN



APPENDIX

- 1 ROYAL GROUP
- 2 ROYAL STONE QUARTZ
- 3 APPLICATION & USES
- 4 OUR COLLECTION
- 5 TECHNICAL DATA
- 6 CARE & MAINTENANCE



1



ROYAL GROUP

ROYAL GROUP was established by a group of experts who have a lot of experience in building materials in general and have deep understanding in the market of "CERAMIC TILES - BRICKS" in particular and also masonry and industrial bricks as well. We have 2 ceramic brick factories, 1 Quartz stone factory,

1 Press Tiles and a system of 5 trading companies in Vietnam.

We are proud to be one of the largest groups in Vietnam in terms of capacity and export rates as well. Since its inception, the company has been moving ahead relentlessly in pursuit of perfection.

ROYAL makes all great things investment in technology with modern production lines by European standards and environmental protection policies.

With our core values "Reliability, high-product quality and perfect services" and the motto "Customer's success is our target for production", we believe that ROYAL would be a prestigious and reliable partner in the field of building materials.

We have exported our products around the world: European countries, Australia, USA, Thailand, Taiwan, Malaysia, India...





2

**ROYAL
STONE
QUARTZ**



ROYAL STONE quartz is a surface composed of up to 95% natural quartz in which pigments and high quality polymer resins are added. The huge investment in R&D in recent years has resulted in such innovative products. ROYAL STONE has over 60 colors with unique decorative finishes in the grain's depth effect.

KEY ADVANTAGES

- High hardness and resistance to abrasion and scratching
- Non-porous, preventing the absorption of water or other liquid
- Anti-acidic, alkali and almost hazardous chemicals
- Resist fats, oils and acids from foods, lemon, wine, etc...
- Great flexural strength and impact resistance
- Care-saving solutions: Lifetime of quartz is longer than natural used, environment-friendly and convenient in usage.



3 & APPLICATION USES

ROYAL STONE quartz surface is suitable for many interior surfaces from kitchen countertops, bathrooms, staircases, walls and floor. We highly recommend using our product for household surfaces such as: kitchen or bathroom when usually have stains, oily foods or using cleaning products. Extraordinary technical properties such as: hardness, strength, anti porosity and easy maintenance make the material a class.





Due to its strength, versatility and low porosity, not only it is perfect to be used in wet and muddy areas, but also ideal for all those places which have high traffic of people such as: gyms, clinics, shopping centres, airports, etc. For such a place ease of maintenance is important, and the ability to conceive large decorative formats and different thickness, reducing the number of joint solutions.



ROYAL
STONE
QUARTZ



4 OUR COLLECTION

ROYAL STONE has created a wide range of colors and textures, able to easily and harmoniously blend with different furniture and environments. With our advanced technology, we produce real stone, the perfection of natural stones.



CALACATTA COLLECTION



MARBLE COLLECTION



CLASSIC COLLECTION



MULTI COLLECTION













CALACATTA
COLLECTION

RSV210

Stone's colors in the catalogue may slightly differ from the real colour



27









MARBLE

COLLECTION



MARBLE COLLECTION



RSV 2002



RSV 140



LV 276



RSV 188



RSV 130



RSV 148



LV 177



RSV 180

These colors in the catalogue may slightly differ from the real marble

MARBLE COLLECTION



LV 211



RSV 196



LV 201



RSV 217



RSV 214



LV 394



RSV 067



RSV 110

Stone's colors in the catalogue may slightly differ from the real stone



RSV 214

RSV



RSV 118

MARBLE COLLECTION



RSV 118



RSV 190



RSV 192



RSV 101



RSV 166



LV 305



RSV 143



LV 2033

Always consult the catalogue for slightly different from the live image



RSV 143

MARBLE COLLECTION



RSV 160



RSV 159



RSV 162



RSV 006



RSV 206



RSV 075



RSV 124



RSV 124

Always consult the catalogue for slightly different from the look code

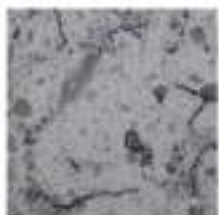
MARBLE COLLECTION



RSV 2227



RSV 184



LV 387



LV 053



RSV 187



RSV 136



LV 2018



RSV 147

MARBLE COLLECTION



RSV 198



RSV 188



RSV 196



LV 201



MARBLE COLLECTION



RSV 214



RSV 100



RSV 090



LV 2025

MARBLE COLLECTION



RSV 166



RSV 151



RSV 110



LV 153

Stone's colors in the catalogue may slightly differ from the real stone



LV 155

MARBLE COLLECTION



RSV 120



RSV 143



RSV 180



RSV 188

Stone's colors in the catalogue may slightly differ from the real colors

MARBLE COLLECTION



RSV 067



LV 177



RSV 145



RSV 11E

MARBLE COLLECTION



RSV 207



RSV 035



RSV 048



RSV 184

Stone's colors in the catalogue may slightly differ from the real colors.



MARBLE COLLECTION



RSV 078



LV 2039



RSV 030



LV 2024

Stone's colors in the catalogue may slightly differ from the real stone.

CLASSIC

COLLECTION



CLASSIC COLLECTION



LS 226



LS 1018



RSS 001



LS 1008



LS 309



RSS 052



RSS 130

Some colors in the catalogue may slightly differ from the real colors



RSS 001



RSS 053

CLASSIC COLLECTION



RSS 069



RSS 077



RSS 1213



RSS 2226

Always consult the catalogue for slightly different from the look color



RSS 157
Stone's colors in this catalogue may slightly differ from the real stone

CLASSIC COLLECTION



RSS 003



RSS 157



RSS 010



RSS 133

Stone's colors in this catalogue may slightly differ from the real stone

CLASSIC COLLECTION



RSS 158



LS 275



RSS 1223



RSS 1214

Some colors in the catalogue may slightly differ from the real colors



LS 275

CLASSIC COLLECTION



LS 235



RSS 008



RSS 105



LS 1017

There's colors in the catalogue may slightly differ from the real colors



1122 1121



 ROYAL STONE

MULTI

COLLECTION



MULTI COLLECTION



LM 078



LM 099



LM 100



RSM 094



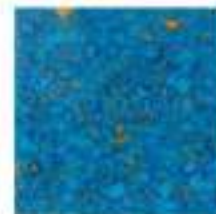
RSM 041



RSM 007



LM 079



LM 089

MULTI COLLECTION



LM 088



LM 113



LM 0952



LM 104



LM 062



LM 090



LM 097



LM 1003

MULTI COLLECTION



LM 1001



LM 072



RSM 024



RSM 030





STANDARD SIZE

THICKNESS (mm)	WIDTH (mm)	LENGTH (mm)	NET WEIGHT (kg/m ²)
15	1600	3200	37.5
20	1600	3200	50
30	1600	3200	75

Thickness 12 mm can be produced according to customer requirements.

COMPARISON TABLE

STANDARD	WATER ABSORPTION (%)	BENDING (MPa)	COMPRESSION (MPa)	STAIN RESISTANCE
ROYALSTONE	★	○	★	★
GRANITE	■	■	★	○
MARBLE	○	■	○	○
ACRYLIC SOLID SURFACE	★	★	○	★

Note: ★ Excellent ○ Good ■ Normal

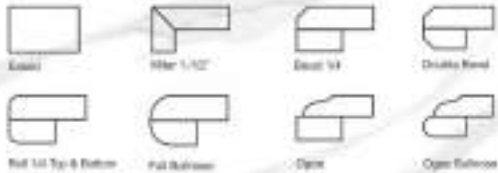
DATASHEET

CHARACTERISTIC		TEST METHOD	RESULT	
1	Thermal Shock 30 Cycles	EN 14617 - 6:2013	MS	
2	Frost Resistance	TCN 807 - 2000	The sample is not destroyed after 100 cycles	
3	Density	kg/m ³	EN 14617 - 1:2013	3.20
4	Water Absorption	%	TCN 807 - 2000	0.01
5	Bending strength Resistance	Mpa	EN 14617 - 2:2008	74.80
6	Compression Resistance	Mpa	EN 14617 - 15:2005	127.00
7	Coefficient of thermal expansion	10 ⁻⁶	EN 14617 - 11:2008	20.40 x 10 ⁻⁶
8	Acid Resistance	J	EN 14617 - 9:2008	3.88
9	Alkaline Resistance	Mpa	EN 14617 - 4:2012	20.80
10	Resistance to staining	White	TCN 807 - 2000	3
		Other oil	TCN 807 - 2000	3
11	Surface hardness		TCN 807 - 2000	7
12	Chemical Resistance	Reference value		
Test Method HCl (acid)			EN 14617 - 10:2008	OK
	-5%	95.0%		
	-6%	96.0%		
Test Method NaOH (base)				
	-5%	95.0%		
	-6%	96.0%		



EDGE PROFILES

Many edge profiles are possible, from a standard edge to bevelled or rounded edges which create the appearance of a thicker slab. All edge details should have a minimum 1/8" radius on any profile. For both top and bottom edges. For high-end finishes, 1/4" minimum radius is suggested.



CARE & MAINTENANCE

For optimal maintenance of ROYAL STONE Quartz material and minimize any removal of material:

(Eg oil or fat, wine, vinegar, lemon, soft drink, coffee etc) from the quartz surface, it is only needed a regular cleaning with a neutral pH product (e.g. Dawn®) clean with water and dry with a dry microfibre cloth or absorbent paper towel (due to their exceptional physical and chemical characteristics).

As outlined we will describe some simple treatment for the most common problems:

- Fat stains: create a great amount of detergent in warm water and rub over the stain using a cloth. Next, rinse it off with water.
- Water line marks: pour some vinegar (or any other strong weak acid such as hydrochloric acid) directly on the surface to be treated. Rinse it off with plenty of water.
- Oil-based stains: Rinse off using a little water and use a little solvent for any remains left behind (acetone or alcohol).

BASIC TECHNICAL SPECIFICATION - MAINTENANCE TIPS

- Do not use ROYAL STONE Quartz outside or in places where UV-ray lamps are fitted (in places subject to intense solar radiation or UV lamps).
- Do not place objects randomly removed from heat on ROYAL STONE Quartz surfaces on a regular basis (frying pans, etc.).
- Do not use water supplies or systems to influence the stone.
- Do not use strippers, acidic acids, degreasers or products with pH in excess of 10 or alkaline based products. Do not use products that contain hydrofluoric acid or silicofluorides. If you use bleach or solvent, you must rinse it off using warm acid (pH level 3) and have it washed with the surface.
- ROYAL STONE Quartz should not be polished, either on flooring or wall surfaces.
- Avoid the countertop from external heat sources.